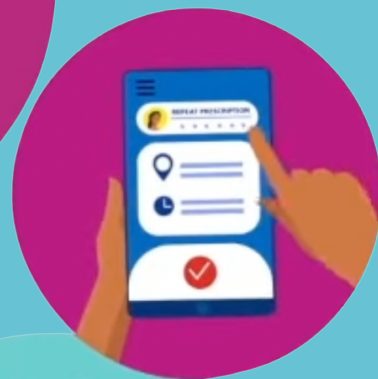
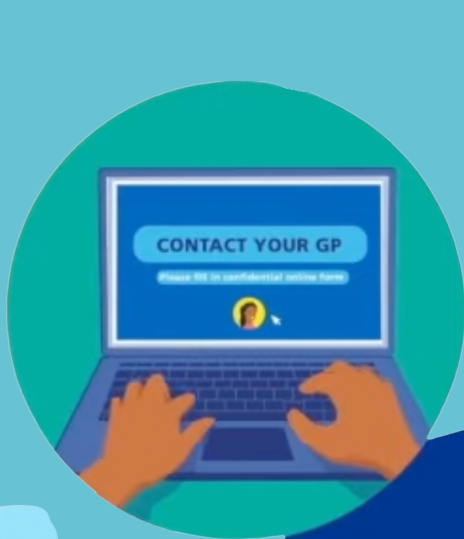


# NHS Urgent Care Services Available in Sheffield



# URGENT CARE SERVICES AVAILABLE IN SHEFFIELD



## **The Children's Hospital Sheffield Accident & Emergencies**

- Western Bank, Sheffield S10 2TH
- 0114 271 7000
- 24 hours a day
- General hospital but offers Accident & Emergencies services

## **Pharmacies**

- Pharmacies offer less serious services to the public such as; vaccines, point-of-care testing, over the counter medications, blood pressure checks, stop smoking services, asthma support, pain management, screening for type 2 diabetes, rash checks and plenty of other services. Pharmacists are trained medical professionals qualified to offer advice on minor ailments such as cold & flu and upset stomachs.

## **999 Emergency services**

- Dial 999
- 24 hours a day
- For urgent help in a life-threatening crisis
- Trained operators to give you the correct service/ advice
- Don't have to have a sim card or credit to make the call, it is completely free.

## **NHS 111**

- Dial 111 for free
- 24 hours a day
- <https://111.nhs.uk/> for online assessment
- Not for emergencies or accidents
- Offers a British sign language interpreter service (if you have hearing difficulty)

# URGENT CARE SERVICES AVAILABLE IN SHEFFIELD



## **Sheffield City NHS walk-in service**

- Rockingham house, Broad lane, S1 3PB
- 0114 241 2700
- 7 days a week 8am-10pm

## **Charles Clifford Dental Hospital**

- 76 Wellesley Road, Sheffield S10 2SZ
- 0114 271 7800
- Monday-Friday 9am-5pm

## **Royal Hallamshire Hospital Minor Injuries unit**

- Glossop Road, Sheffield S10 2JF
- 0114 271 2071
- 7 days a week 8am-8pm
- General hospital but doesn't offer accident and emergency services, only minor injuries (E.G. sprains and strains, wound infections and rib injuries)
- 16+ only

## **Northern General Hospital Accident & Emergencies**

- Herries Road, Sheffield S5 7AU
- 0114 243 4343
- 24 hours a day
- Offers Accident & Emergencies services
- 16+ only

# URGENT CARE SERVICES AVAILABLE IN SHEFFIELD



## GP hubs

- GP hubs are staffed by experienced GPs and Nurses and offer assessment and treatment for adults and children.
- Offer routine reviews of mental health problems
- Routine and same-day appointments are offered
- By phone, video, or face to face depending on your clinical health.
- Open outside of your usual GP surgery hours, Hub appointments are available for routine or urgent care.
- Contact 111 to book an appointment if your regular GP is closed.
- Open: evenings and weekends 365 days a year.

## Sexual Health Clinics

- Royal Hallamshire Hospital , Glossop Road, Sheffield S10 2JF
- [0114 226 8888](tel:01142268888)
- Monday-Friday 8am-6pm
- Offers emergency contraception
- Emergency treatment for STI and UTI

## Walk-in Centre

- You don't need to be registered
- Suitable for treating minor illness such as infections
- Open from 8:00 - 22:00 365 days a year
- Broad Lane S1 3PB

## Emergency Dentistry

- Contact 111 to set up an emergency dentist appointment for you